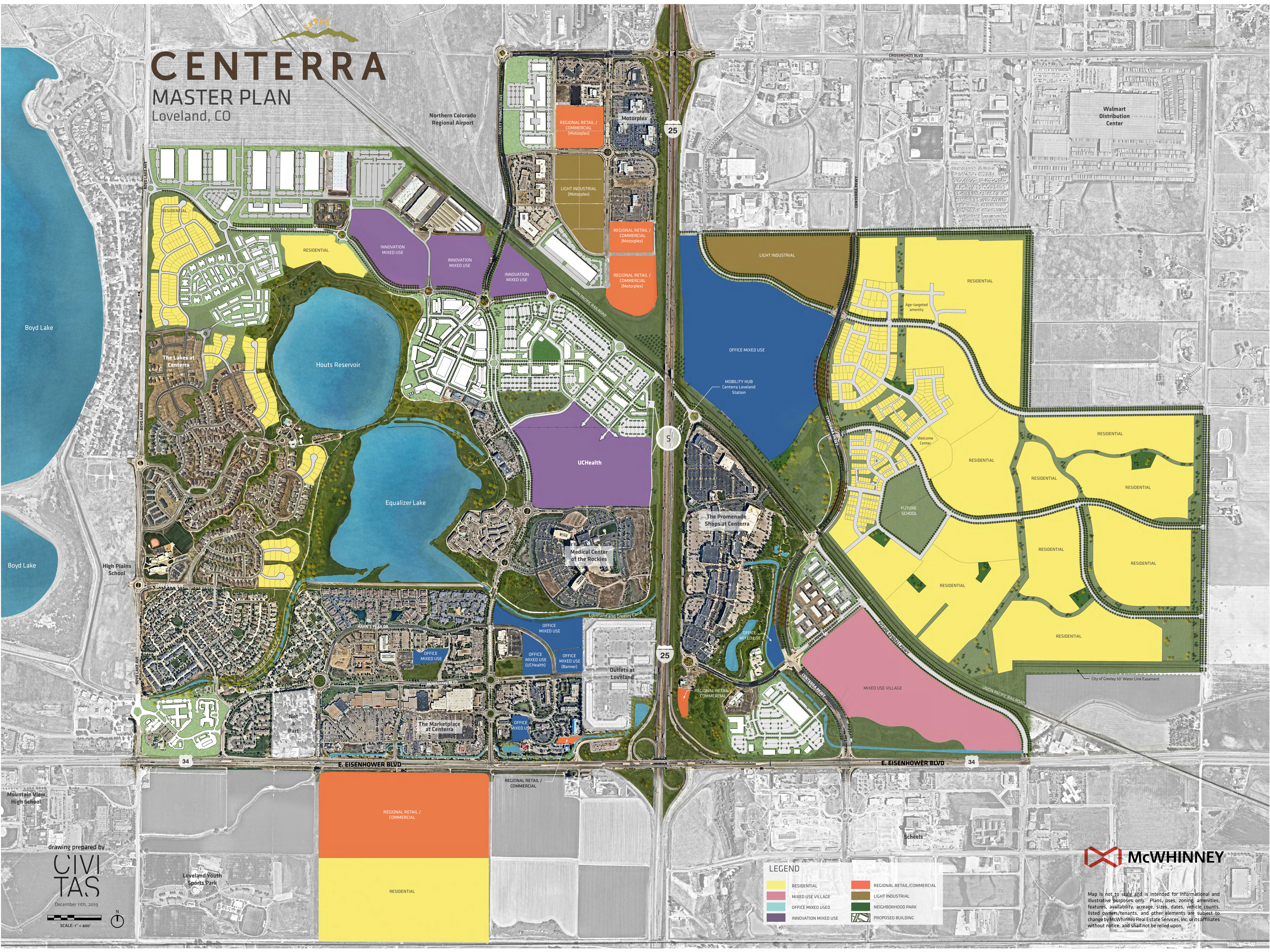


CENTERRA

MASTER PLAN

Loveland, CO



Northern Colorado Regional Airport

Walmart Distribution Center

Boyd Lake

Houts Reservoir

Equalizer Lake

UCHealth

Medical Center of the Rockies

The Promenade Shops at Centerra

Loveland and Greeley Canal

Hahn's Peak Dr

Office Mixed Use (UCHealth)

Office Mixed Use (Banner)

Outlets at Loveland

The Marketplace at Centerra

Office Mixed Use

Mixed Use Village

City of Greeley 50' Water Line Easement

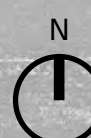
Mountain View High School

Loveland Youth Sports Park

Scheels

drawing prepared by
CIVITAS

December 11th, 2019
SCALE: 1" = 400'



LEGEND

- RESIDENTIAL
- REGIONAL RETAIL/COMMERCIAL
- LIGHT INDUSTRIAL
- OFFICE MIXED USE
- INNOVATION MIXED USE
- NEIGHBORHOOD PARK
- PROPOSED BUILDING



Map is not to scale and is intended for informational and illustrative purposes only. Plans, uses, zoning, amenities, features, availability, acreage, sizes, dates, vehicle counts, listed owners/tenants, and other elements are subject to change by McWhinney Real Estate Services, Inc. or its affiliates without notice, and shall not be relied upon.